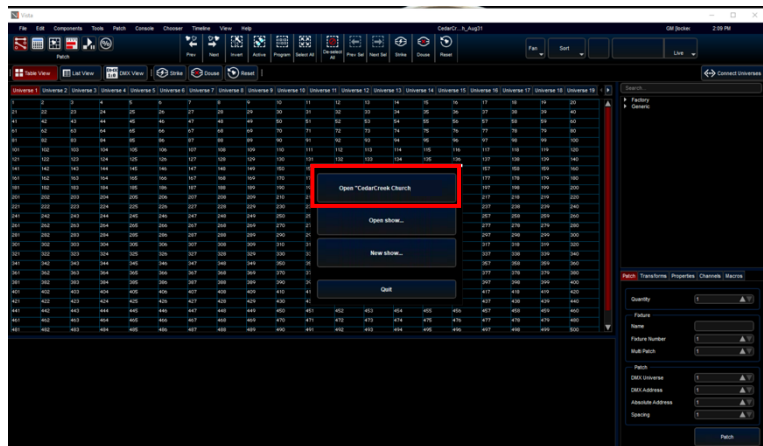
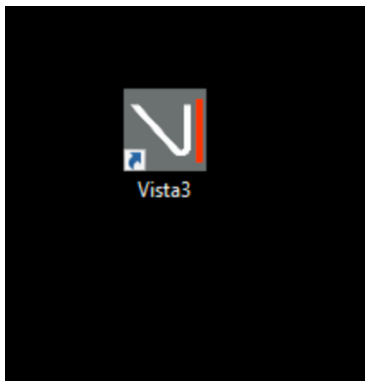
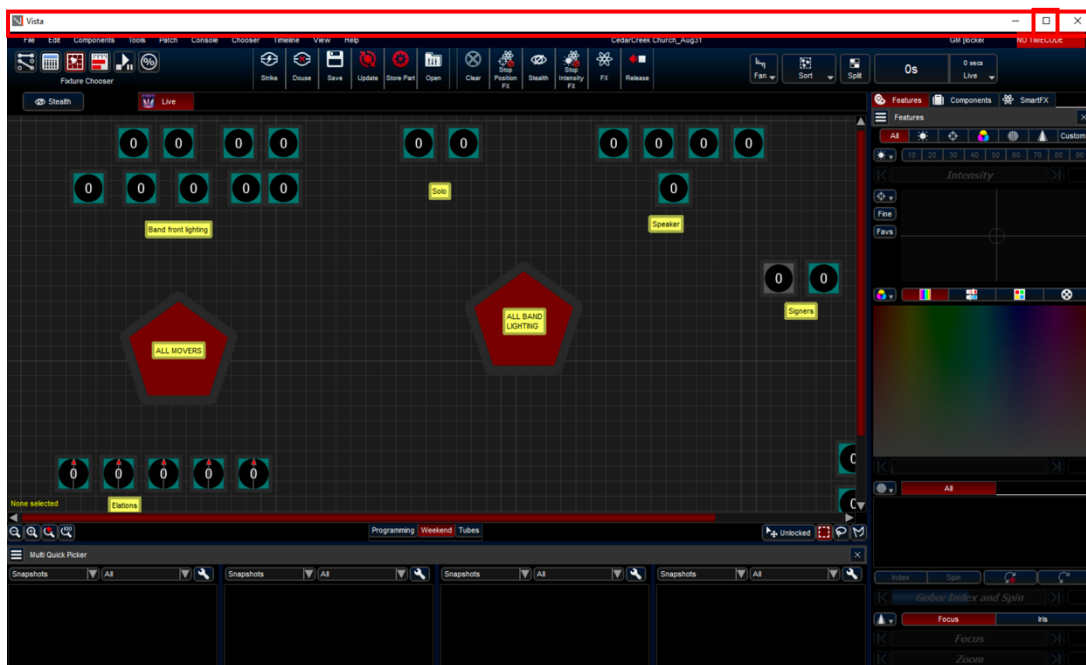


PB Lighting Startup

1. Flip the switch on the back of the board to the on position. Then press the power button located in the fold out tray.
2. Click on the Vista application on the monitor. Once it has booted up, "open" the weekend show file. It's the top box and will be labeled 'CedarCreek Church'



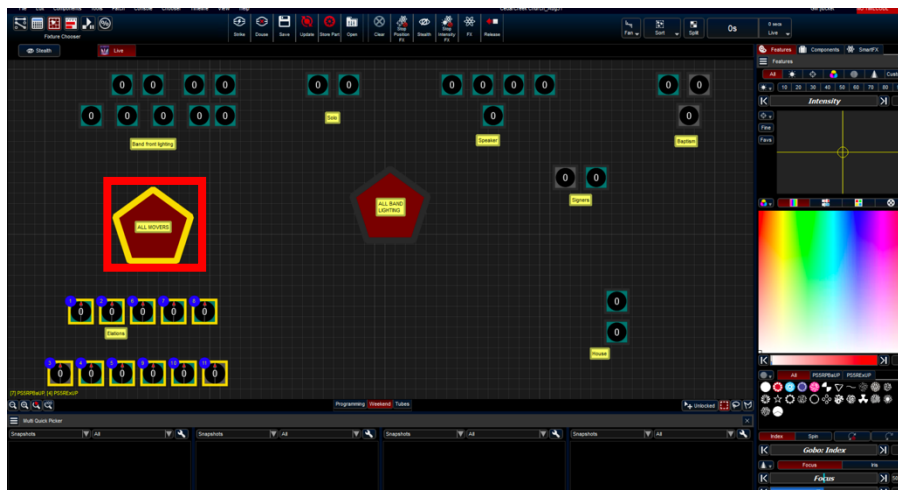
3. If not full screen, double click the header bar or the square in the top right corner to "maximize" the window so it fills the entire monitor.



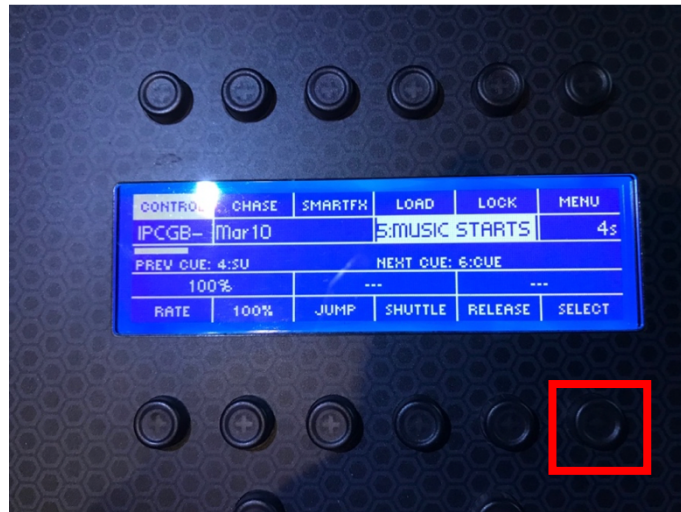
- Once the show loads, **Wait 1 minute before proceeding to the next step.** Upon loading the show, it takes Vista 1 minute to begin communicating with our lighting network so you can control fixtures. If you do not wait, the commands that are sent will not be received by fixtures. (i.e. Movers & LED's may not receive power, movers may not strike, etc.) So please wait, this step is crucial.
- Press the Play button located underneath the MOVER POWER & LED POWER (Located in the top right bank of playbacks on the board). Wait Approximately 2 minutes before proceeding to the next step.



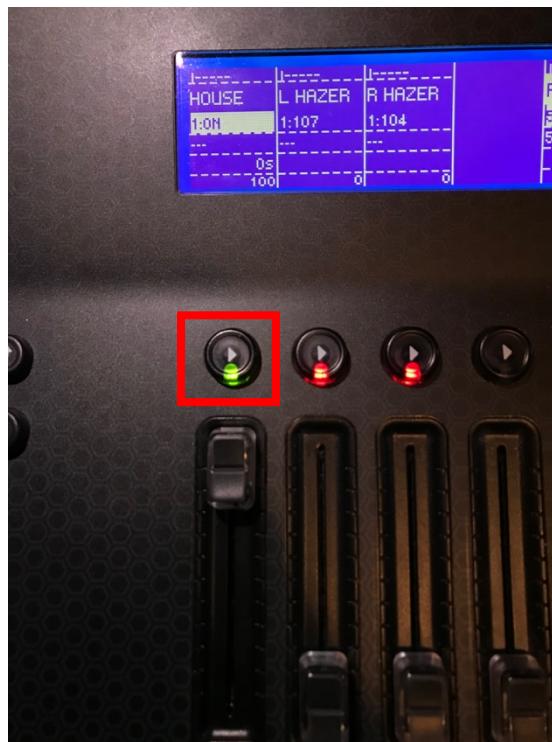
- Next, strike the movers. Click the shape (NOT the text) that is labeled 'All Movers', then press the strike button at the top of the screen. A window will pop up and you can just ignore everything and click 'OK' The striking process is SLOW. The lights will freeze position while striking and striking can take up to 2 minutes to complete. Click anywhere in the window to deselect movers once struck



7. In the small right rectangular screen, click the right hand button below where it says 'Select'.



8. Press the play button on the located under the house lights fader and bring it all the way up.



9. Plug the black DMX cable into the wall

10. Press the play button located underneath both hazer faders



11. Press your 'GO' button in the near the bottom right corner of the console which will take you into your first cue.

